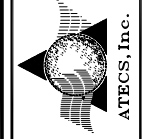


REVISIONS	NO.	DATE	BY

Advanced Technology Environmental Control
 SYSTEMS
 1085 Sharp Court
 Concord, California 94518
 Phone: 925-798-3377
 Fax: 925-798-3380



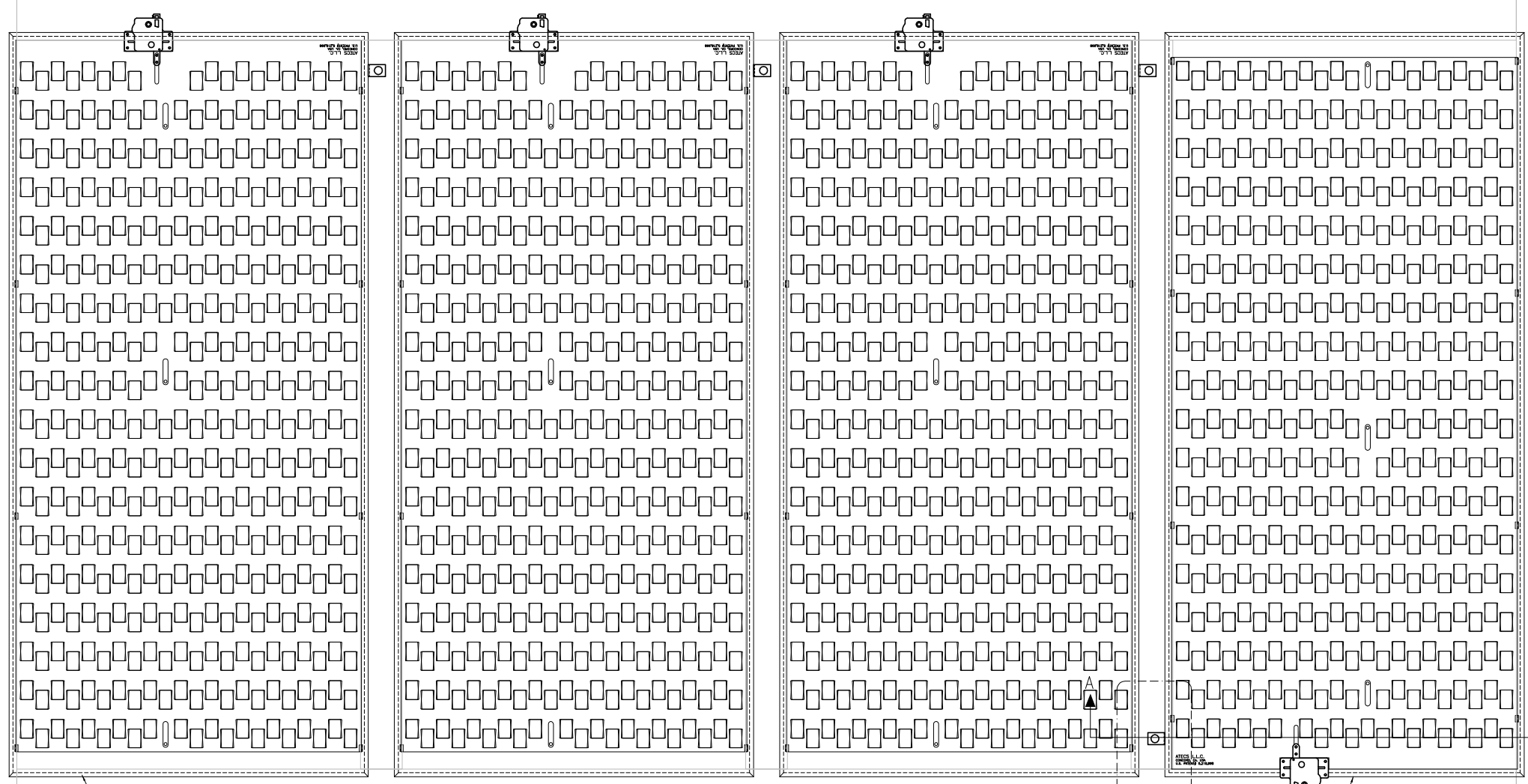
CUSTOM PLENUM DAMPER MODIFICATIONS FOR SIDE ADJUSTMENT OPTIONAL LOCATION "B"

Designed By:
 BJN
 Drawn By:
 CRE
 Drawing Scale:
 AS NOTED
 Date:
 10/11/02

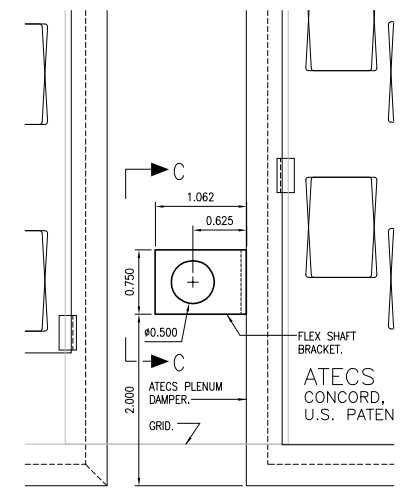
Drawing No.

SK-98

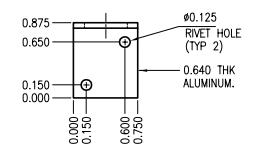
GRID SYSTEM CENTER AREA SHOWN FOR LONGSIDE ADJUSTMENT OF DAMPER.



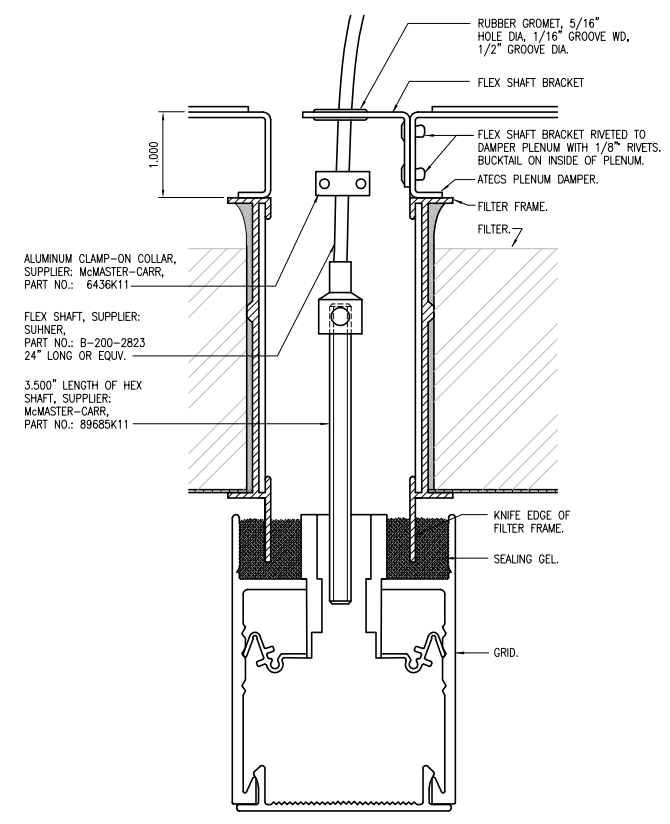
① PLENUM DAMPER AND GRID ASSEMBLY - TOP VIEW
 SCALE: 3"=1'-0"



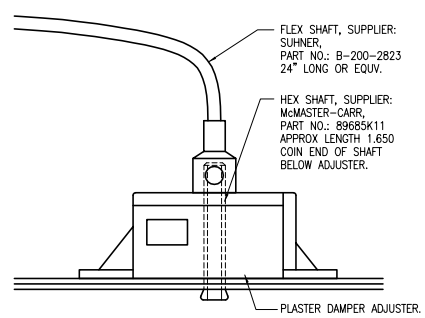
② ENLARGED DETAIL
 SCALE: 1"=1"



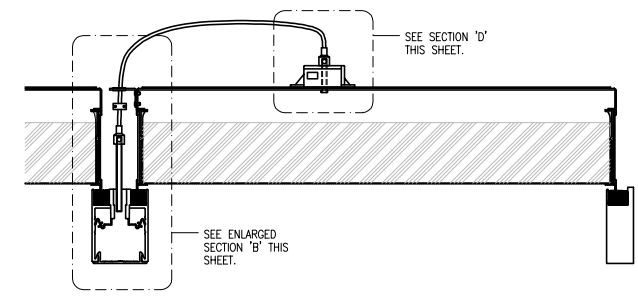
③ VIEW C-C
 SCALE: 1"=1"



④ ENLARGED SECTION B
 SCALE: 1"=1"



⑤ SECTION D
 SCALE: 1"=1"



⑥ SECTION A-A
 SCALE: 3"=1'-0"

ATECS PLENUM DAMPER MODEL PD-5A-RT. (TYP 3 DAMPERS THIS GRID SYSTEM)

SEE ENLARGED DETAIL #2 THIS SHEET.

ATECS PLENUM DAMPER MODEL PD-5A. (TYP 1 DAMPER THIS GRID SYSTEM)

FLEX SHAFT, SUPPLIER: SUHNER, PART NO.: B-200-2823 24" LONG OR EQUIV.
 HEX SHAFT, SUPPLIER: McMASTER-CARR, PART NO.: 89685K11 APPROX LENGTH 1.650 COIN END OF SHAFT BELOW ADJUSTER.

PLASTER DAMPER ADJUSTER.

SEE SECTION 'D' THIS SHEET.

SEE ENLARGED SECTION 'B' THIS SHEET.

ALUMINUM CLAMP-ON COLLAR, SUPPLIER: McMASTER-CARR, PART NO.: 6436K11

FLEX SHAFT, SUPPLIER: SUHNER, PART NO.: B-200-2823 24" LONG OR EQUIV.

3.500" LENGTH OF HEX SHAFT, SUPPLIER: McMASTER-CARR, PART NO.: 89685K11

RUBBER GROMMET, 5/16" HOLE DIA, 1/16" GROOVE WD, 1/2" GROOVE DIA.

FLEX SHAFT BRACKET

FLEX SHAFT BRACKET RIVETED TO DAMPER PLENUM WITH 1/8" RIVETS. BUCKTAL ON INSIDE OF PLENUM.

ATECS PLENUM DAMPER.

FILTER FRAME.

FILTER.

KNIFE EDGE OF FILTER FRAME.

SEALING GEL.

GRID.